



June 2025

KWOA Wood Post

## Woodland Community Updates

### WOODLAND OWNER EXTRAVAGANZA

Join us for a day filled with networking, learning, and connecting YOU, the woodland owner, with over **15 ESSENTIAL AGENCIES** you need to enhance your woodlands.

**9 AM – 3:30 PM**  
**LUNCH INCLUDED**

**Saturday, July 19**  
**Whitley Co. Extension Office**

*OR*

**Saturday, August 16**  
**Pendleton Co. Extension Office**

Kentucky Woodland Owners Short Course

15 Agencies

Woodland Management Assistance

Financial Help Avenues

Wildlife Habitat Resources

6 Webinars Included

Farm Tour

Cooperative Extension Service  
FORESTRY AND NATURAL RESOURCES - EXTENSION

Register: [WOSC.ca.uky.edu/2025-WOSC](https://WOSC.ca.uky.edu/2025-WOSC)

## 2025 Woodland Owners Short Course

These courses are the premier venue for private landowners to learn about managing their woodlands. The 2025 WOSC offers online sessions with an in-person field day option. WOSC Online Webinars Tuesday & Thursdays, 7-8:30 PM ET, **June 10- June 26**. Field Days **July 19**, Whitley County, or **August 16**, Pendleton County. Get all the details [here](#) and register [here](#). Note: You can still register and receive link to the recorded online session.



KWOA has been a long-time supporter of these courses. Because we think these courses are so important, KWOA is offering a [special \\$15 introductory one-year KWOA membership](#) through 12/31/26 for new members only who join KWOA and pay by cash or check in person at one of the WOSC Field Days:

- July 19: WOSC Field Day, Whitley County
- August 16: WOSC Field Day, Pendleton County

## KWOA Fall Conference and Membership Meeting

### NEW LOCATION!

Plans are underway. Here's what we know so far:

- **October 6: Morgan County KDF Tree Nursery Tour:**  
We will meet at the nursery and learn about the operation. Directions and information [here](#). The drive from the nursery to Natural Bridge, where the conference will be held is about 45 minutes.
- **October 7 - 8: Natural Bridge State Park.** Full-day programs on Tuesday and there will be a short day on Wednesday. Complete agenda coming soon! Stay tuned for more details! You can also check the website for updates [here](#). Registration is open online [here](#)
- Call Natural Bridge State Resort Park at 606-663-2214 now to confirm your lodging reservations. Please remember to mention that you are attending the Kentucky Woodlands Owners Annual Meeting Conference and reference the **Group Code 3436** to receive our Group Rate.



The ever-popular *Woodland Quiz* will return! The agenda also includes *regional breakout sessions* for one-to-one interaction with members in your region. We are planning to cover white oak/upland hardwood regeneration, invasive species management, managing forests for bird habitat, and more. Be thinking about your *Silent Auction* items!

## Advocating for Woodland Owners

KWOA advocates for Kentucky Woodland Owners on many fronts throughout the year. These advocacy efforts take many forms. We may be building working relationships with other conservation organizations, speaking to local, state and federal elected officials, working closely with state and federal agencies, state universities, or with businesses such as suppliers, banks, and insurance providers. These efforts bring synergy to woodland owners in the state by allowing other people to understand the challenges we face and to realize woodland owners can be good stewards of our natural resource, provide huge economic impacts for the state and can also be good clients and customers. Note: You can always find links to the latest KY Forest Sector Economic Contribution Report and other valuable resource information on our website under Resources: Quick Reference Links [here](#).

As woodland owners, these advocacy efforts positively impact the resources we rely on and our ability to effectively manage the natural resources that comprise our woodlands.

- KWOA has recently partnered with the White Oak Initiative, the Alabama Forestry Foundation, The Tennessee Forestry Foundation, and The Kentucky Forest

Industries Association in a grant from the National Fish and Wildlife and Wildlife Foundation to Restore White Oak populations in the Cumberland Plateau. This grant will provide funds for educational programs to train woodland owners in Kentucky's Cumberland Plateau region on white oak restoration on private lands. there will be both traditional educational events (like a typical extension office program or classroom setting) as well as hands-on teaching events which will allow the landowner to actually do the practices and become familiar with the activities needed to restore natural regeneration. Stay tuned for more details.

- KWOA has also been working closely with Kentucky NRCS at both the State Technical Committee meetings and the Local Working Group meetings to ensure Woodland Owners needs are known and understood. KWOA has a strong working relationship with NRCS and we feel NRCS values Kentucky's woodland owners as very important stewards of our state's natural resources.
- KWOA has a strong working relationship with Kentucky Farm Bureau and we are represented on the KFB Forestry Advisory Committee. KFB has been a longtime ally with KWOA and we have worked together on many issues over the years. Most recently we have been working with KFB on the Kentucky Farmland Transition Initiative (KFTI). Information on this initiative can be found on our website [here](#) and at the [KFTI website](#).

These are just a few of the ways KWOA advocates for you as a member and a woodland owner. If you have specific issues you feel we should be advocating for let us know at [info@kwoa.net](mailto:info@kwoa.net).



**Kentucky Prescribed Fire Council:** The mission is to promote understanding and enhance collaboration for the use of ecologically based prescribed fire. Learn more at their website [here](#) and [here](#)

#### *2025 Landowner Course offerings:*

- July 12th, Muhlenberg County, [read more.](#)
- August 9th, Franklin County, [read more.](#)
- September 13th, Nicholas County, [read more.](#)
- September, Rowan County, details to come.
- More to come as dates are set!

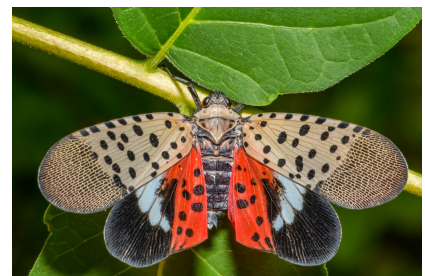
## **Items of Interest Previously Posted and Still Good**

### **Join UK's Invasive Species Citizen Science**

**program!** Anyone can be a citizen scientist, regardless of where they live in Kentucky. It doesn't matter how old you are or what your background is. All it takes is some time, curiosity, and a sense of wonder.

UK uses the Survey123 app to collect data for the citizen science surveys. It is easy to use and a free download.

To download the app on your mobile device, search Survey123 in the App Store (Apple) or Google Play (Android). Here is the link to the website to give you more information.





**KSU Welcomes Paul Baker, a new research entomologist!** Paul is engaged in longhorn beetle trapping with specific targets for accessible woodlands. Are you willing to offer Paul properties with the following?



- Mature maple stands
- Mid to late successional woodlands – any quality
- Can be separate sites
- Areas that can accommodate 300 meter transects
- Within 45 minutes of Frankfort, the closer the better
- Areas where traps can be placed out of immediate view of the public

If so, reach out to Paul at [paul.baker@kysu.edu](mailto:paul.baker@kysu.edu), and he can provide more specific details. He has just started with KSU and has ongoing projects that need sites identified quickly (within a day). If something or someone fits this, we'd be grateful.



---

## Save the Date for Upcoming Events

- **September 19-20:** Kentucky Wood Expo - 36th Annual see updates from KFIA [here](#).
- **October 6-8:** KWOA Fall Conference and Membership Meeting - See above & stay tuned!
- **December 2-3:** 2025 KSU Habitat Symposium - Stay tuned for details

---

**Need Help in the Woods?** Check out the **Quick Reference Links** on our KWOA Resources section [here](#). You will find links to these resources and more:

- Both Kentucky Division of Forestry (KDF) and Kentucky Association of Consulting Foresters (KACF) can help you develop a management Plan for your woodlands.
  - KDF Vendors List of people who can help carry out the practices for or with you.
  - KACF Find a Forester List
  - Natural Resources Conservation Service (NRCS) and Farm Service Agency (FSA) are the primary source of information on programs to help you carry out management practices on your land. [Find your local office](#).
  - UK Forestry and Natural Resources Cooperative Extension offers a wealth of helpful publications and programming; learn more <https://forestry.ca.uky.edu/extension>. Find [your county extension office](#) and let them know you are interested in forestry-related programs locally.
  - Kentucky Farmland Transition Initiative, ([KFTI](#)) addressing the loss of Kentucky farmland and decline in Kentucky farmers
-

## Planning a Harvest?

A Kentucky Master Logger must be onsite and in charge of every commercial logging operation (excluding horse loggers). Kentucky's best management practices must be used in every commercial logging operation (including horse loggers). Here are some helpful resources ( find links on our Resources Section: [Quick Reference Links](#) noted above.

- [Kentucky Master Logger Program](#)
- [Kentucky Division of Forestry](#)
- [Bad Actor Information & List](#)
- [Kentucky Association of Consulting Foresters](#)

## Just so you know...

- If you haven't already joined the KWOA network, [click here to join](#). **NOTE: Annual dues are going up by \$5 to \$40/yr for FY 2026. The change goes into effect July 1.**
- KWOA members receive a 10% discount at [Forestry Suppliers](#). The code will be on an emailed receipt when you join or renew online.
- You can share our news and mission! Links to do so can be found at the bottom of this email.
- Don't hesitate to [contact us](#) with questions, suggestions, news, or to volunteer.

**Growing Forests for Our Future! KWOA volunteers work year-round to support Kentucky's woodland owners and contribute to sustainable forestry.**

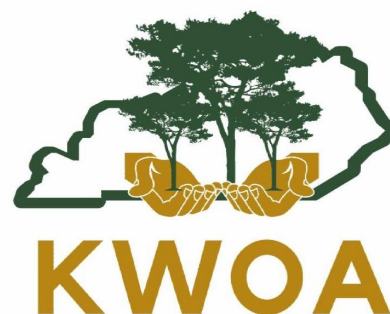
## KWOA Mission

*"Bringing people and woodland sustainability together"*

Contact Us

### Kentucky Woodland Owners Association

P.O.Box 1201  
Frankfort, KY 40602  
[info@kwoa.net](mailto:info@kwoa.net)  
[www.kwoa.net](http://www.kwoa.net)



Share This Email



Share This Email



Share This Email



Share This Email



Try email marketing for free today!